

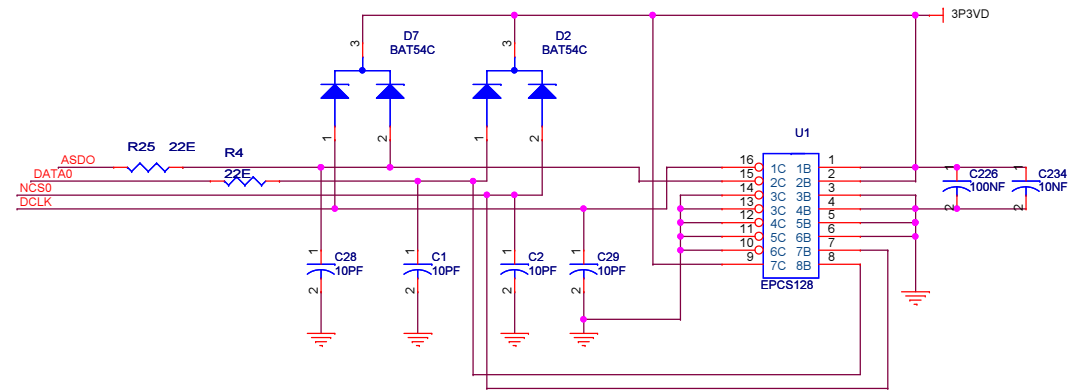
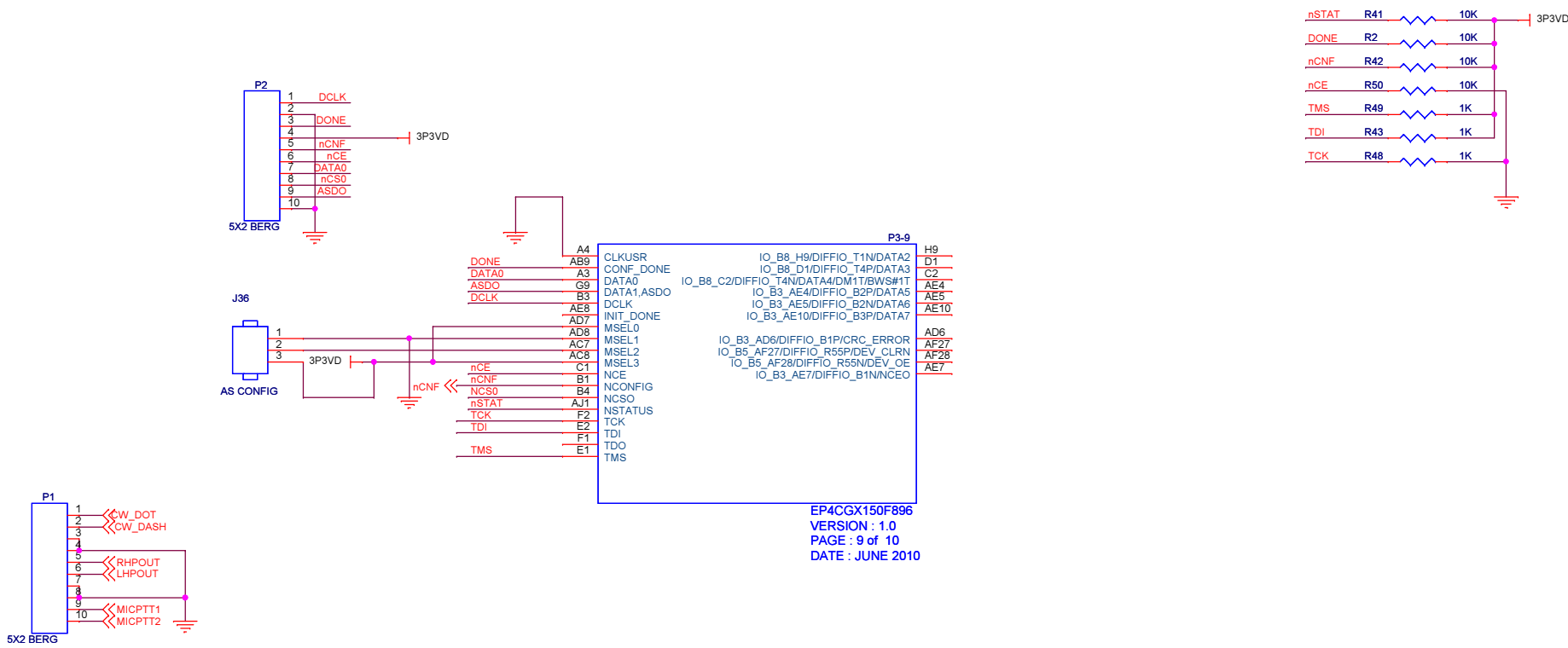
**P3-2**

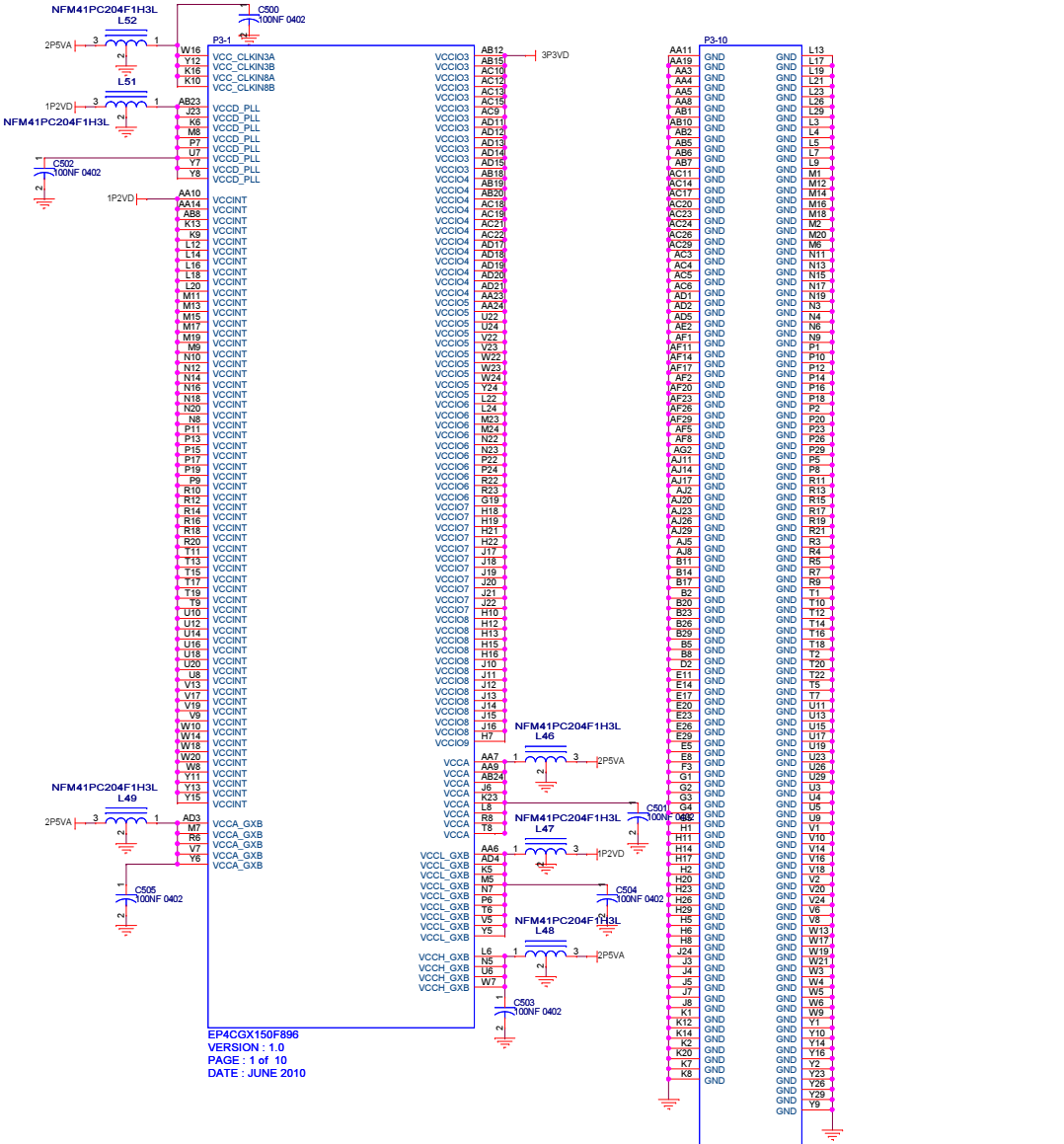
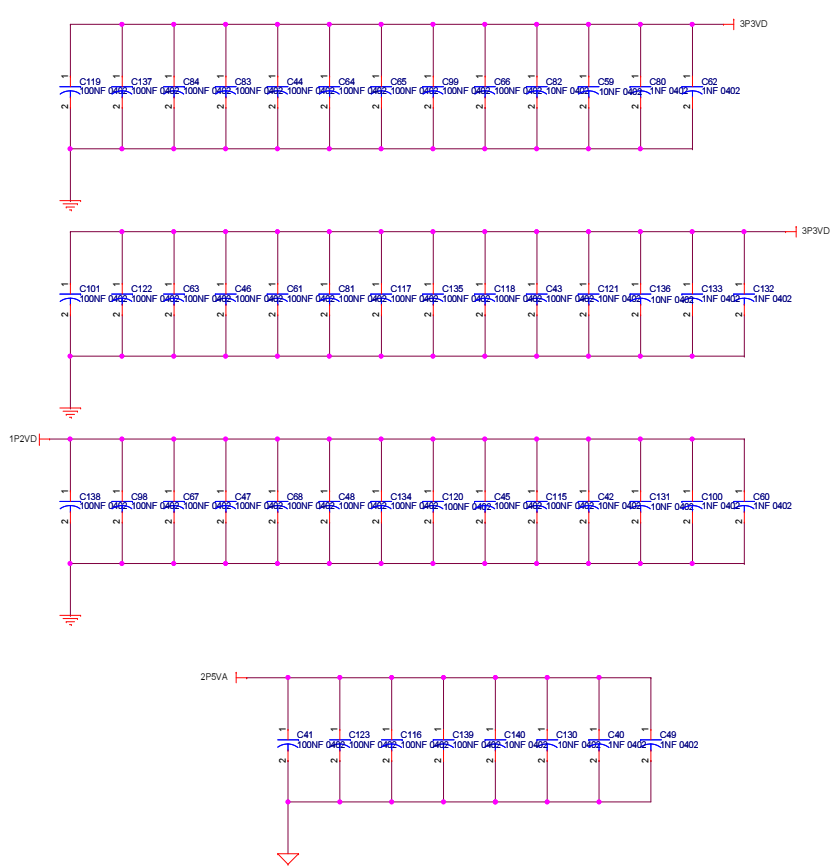
AE6	PHY GTX_CLOCK
AF6	IO_B3_AF6/PLL1_CLKOUTP
AF7	IO_B3_AF7/PLL1_CLKOUTN
AG6	IO_B3_AG6/PLL6_CLKOUTP
AG7	IO_B3_AG7/PLL6_CLKOUTN
AF8	IO_B3_AF8/PLL6_CLKOUTP
AF9	IO_B3_AF9/PLL6_CLKOUTN
AA12	IO_B3_AA12/DIFFIO_B20P
AA13	IO_B3_AA13/DIFFIO_B20N
AA15	IO_B3_AA15/DIFFIO_B30P/DQ5B
AA16	IO_B3_AA16/DIFFIO_B25P
AB11	IO_B3_AB11/DIFFIO_B20N
AB13	IO_B3_AB13/DIFFIO_B30N/DQ5B
AB14	IO_B3_AB14/DIFFIO_B30N
AB16	IO_B3_AB16/DIFFIO_B25N/DQ5B
AD9	IO_B3_AD9/DIFFIO_B7N
AD10	IO_B3_AD10/DIFFIO_B7N
AD11	IO_B3_AD11/DIFFIO_B7P/DQ5B/CO1B# DPCLK0
AE12	IO_B3_AE12/DIFFIO_B14P/DQ3B
AE13	IO_B3_AE13/DIFFIO_B14P/DQ3B
AE14	IO_B3_AE14/DIFFIO_B31P/DQ5B
AE15	IO_B3_AE15/DIFFIO_B31N
AE3	IO_B3_AE3/DIFFIO_B5P/DQ5B
AF10	IO_B3_AF10/DIFFIO_B3N
AF12	IO_B3_AF12/DIFFIO_B14N
AF13	IO_B3_AF13/DIFFIO_B16N
AF15	IO_B3_AF15/DIFFIO_B32P/DQ5B/CO5B# DPCLK2
AF4	IO_B3_AF4/DIFFIO_B4P
AG10	IO_B3_AG10/DIFFIO_B17P/DQ3B
AG12	IO_B3_AG12/DIFFIO_B19P
AG13	IO_B3_AG13/DIFFIO_B21P/DQ3B
AG15	IO_B3_AG15/DIFFIO_B33N
AG3	IO_B3_AG3/DIFFIO_B6P
AG4	IO_B3_AG4/DIFFIO_B4N
AG5	IO_B3_AG5/DIFFIO_B19P/DQ1B
AG7	IO_B3_AG7/DIFFIO_B24P
AG8	IO_B3_AG8/DIFFIO_B22P
AH10	IO_B3_AH10/DIFFIO_B17N
AH11	IO_B3_AH11/DIFFIO_B18P/DQ3B
AH13	IO_B3_AH13/DIFFIO_B19N/DQ3B
AH14	IO_B3_AH14/DIFFIO_B26N
AH15	IO_B3_AH15/DIFFIO_B35P/DQ5B
AH16	IO_B3_AH16/DIFFIO_B35N/DQ5B

**U301**

A15	V55	VCC	48	RAM_A16
A16	V55	VCC	48	RAM_BYTE
A17	V55	VCC	48	RAM_A21
A18	V55	VCC	48	RAM_I07
A19	V55	VCC	48	RAM_I04
A20	V55	VCC	48	RAM_I02
A21	V55	VCC	48	RAM_I02
A22	V55	VCC	48	RAM_I02
A23	V55	VCC	48	RAM_I02
A24	V55	VCC	48	RAM_I02
A25	V55	VCC	48	RAM_I02
A26	V55	VCC	48	RAM_I02
A27	V55	VCC	48	RAM_I02
A28	V55	VCC	48	RAM_I02
A29	V55	VCC	48	RAM_I02
A30	V55	VCC	48	RAM_I02
A31	V55	VCC	48	RAM_I02
A32	V55	VCC	48	RAM_I02
A33	V55	VCC	48	RAM_I02
A34	V55	VCC	48	RAM_I02
A35	V55	VCC	48	RAM_I02
A36	V55	VCC	48	RAM_I02
A37	V55	VCC	48	RAM_I02
A38	V55	VCC	48	RAM_I02
A39	V55	VCC	48	RAM_I02
A40	V55	VCC	48	RAM_I02
A41	V55	VCC	48	RAM_I02
A42	V55	VCC	48	RAM_I02
A43	V55	VCC	48	RAM_I02
A44	V55	VCC	48	RAM_I02
A45	V55	VCC	48	RAM_I02
A46	V55	VCC	48	RAM_I02
A47	V55	VCC	48	RAM_I02
A48	V55	VCC	48	RAM_I02
A49	V55	VCC	48	RAM_I02
A50	V55	VCC	48	RAM_I02
A51	V55	VCC	48	RAM_I02
A52	V55	VCC	48	RAM_I02
A53	V55	VCC	48	RAM_I02
A54	V55	VCC	48	RAM_I02
A55	V55	VCC	48	RAM_I02
A56	V55	VCC	48	RAM_I02
A57	V55	VCC	48	RAM_I02
A58	V55	VCC	48	RAM_I02
A59	V55	VCC	48	RAM_I02
A60	V55	VCC	48	RAM_I02

EP4CGX150F896  
 VERSION : 1.0  
 PAGE : 2 of 10  
 DATE : JUNE 2010

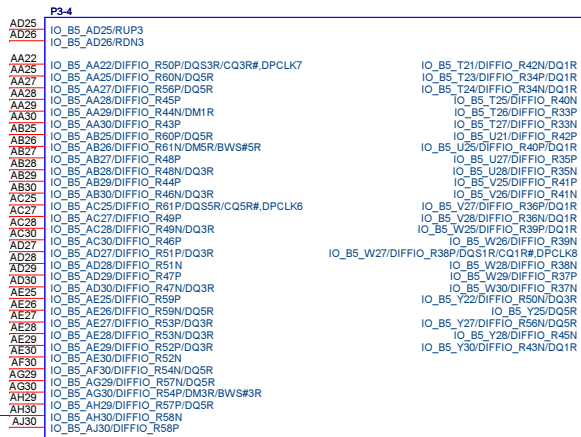




EP4CGX150F896  
 VERSION : 1.0  
 PAGE : 1 of 10  
 DATE : JUNE 2010

EP4CGX150F896  
 VERSION : 1.0  
 PAGE : 10 of 10  
 DATE : JUNE 2010

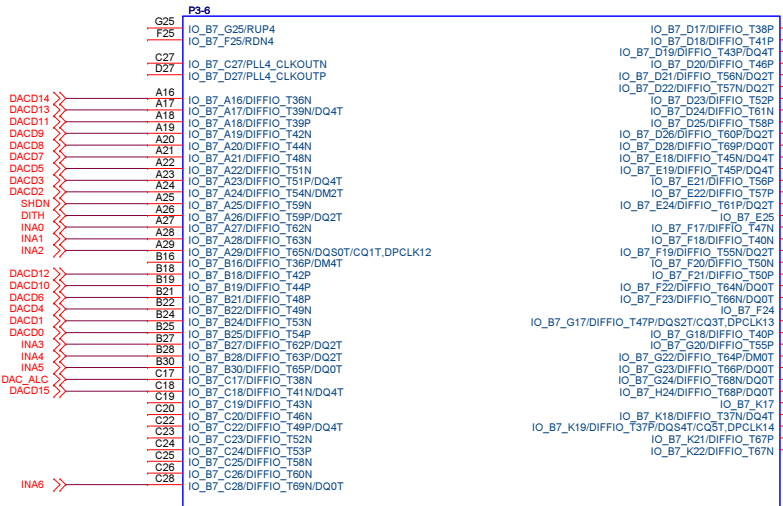




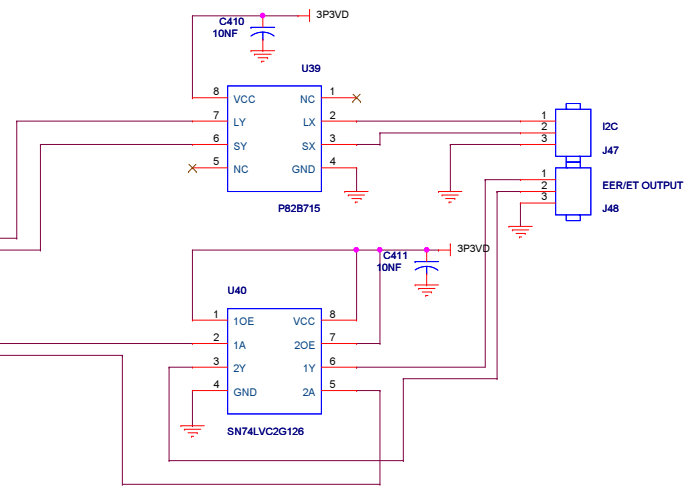
EP4CGX150F896  
VERSION : 1.0  
PAGE : 4 of 10  
DATE : JUNE 2010

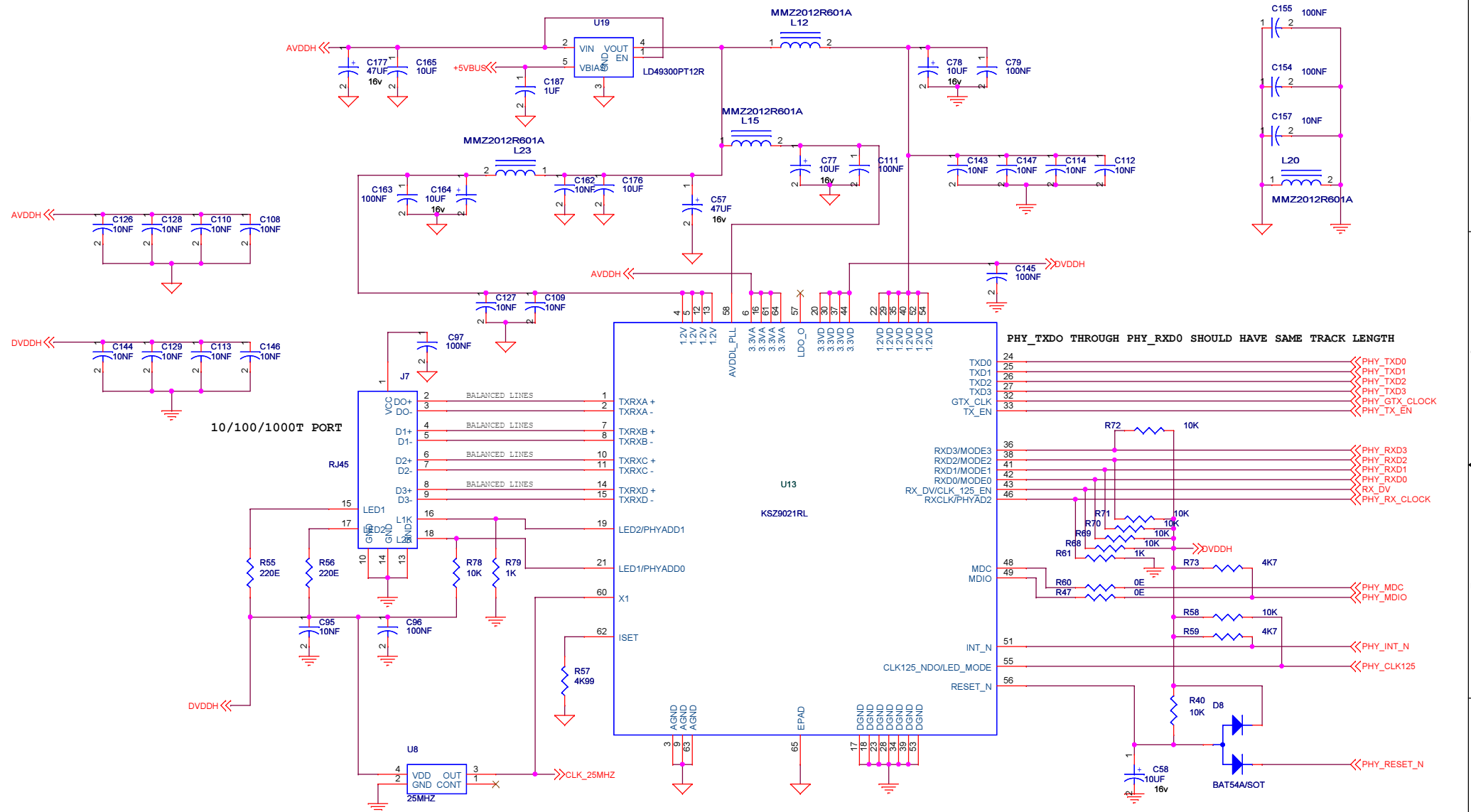


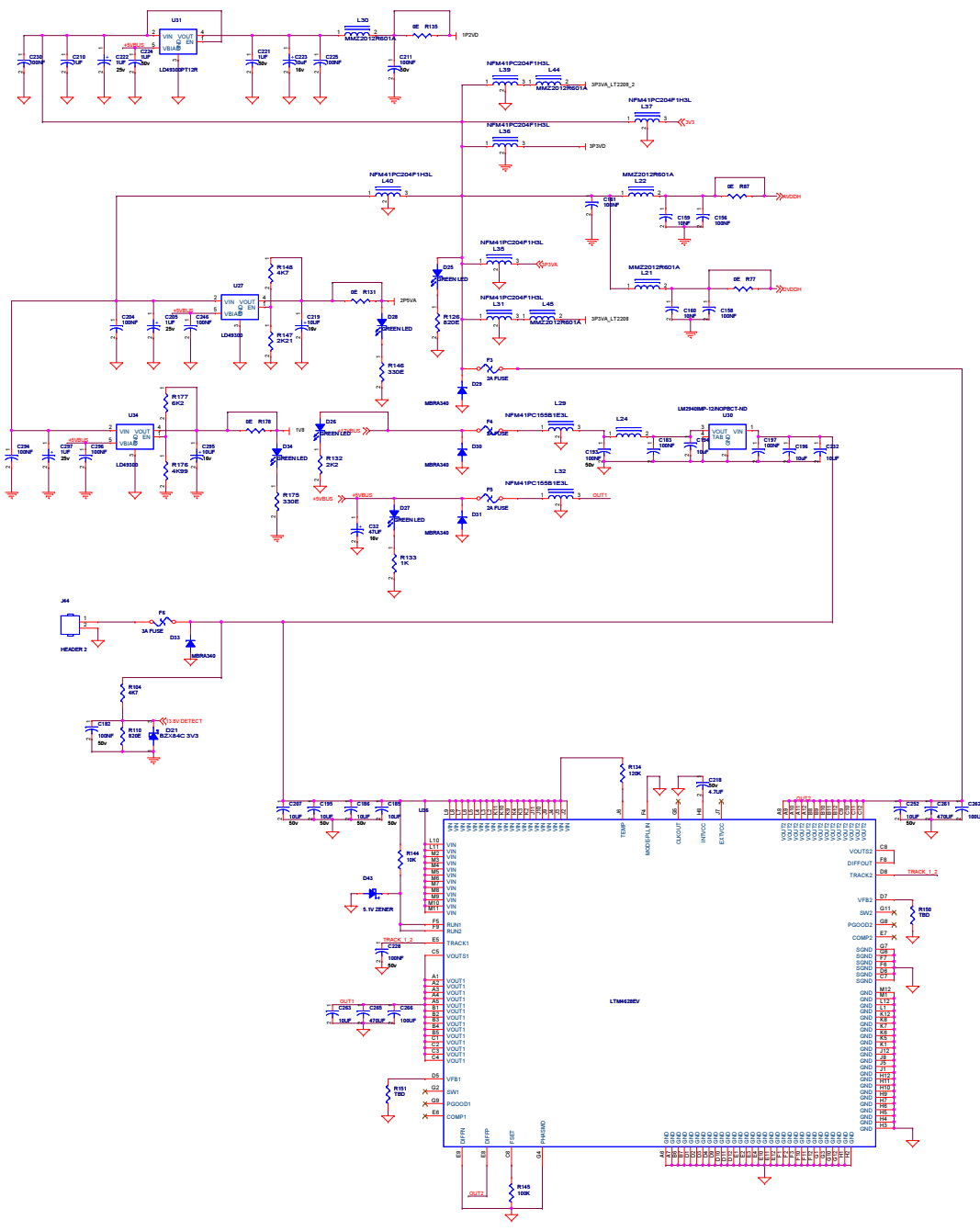
EP4CGX150F896  
VERSION : 1.0  
PAGE : 5 of 10  
DATE : JUNE 2010



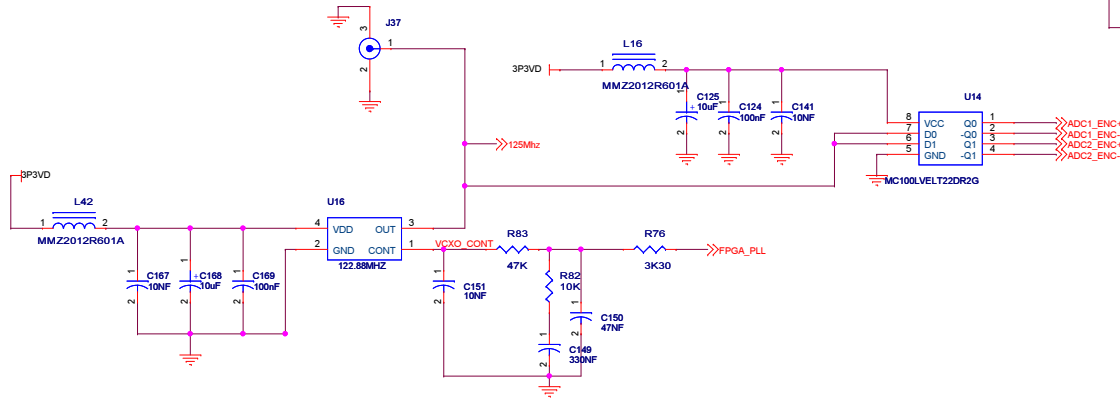
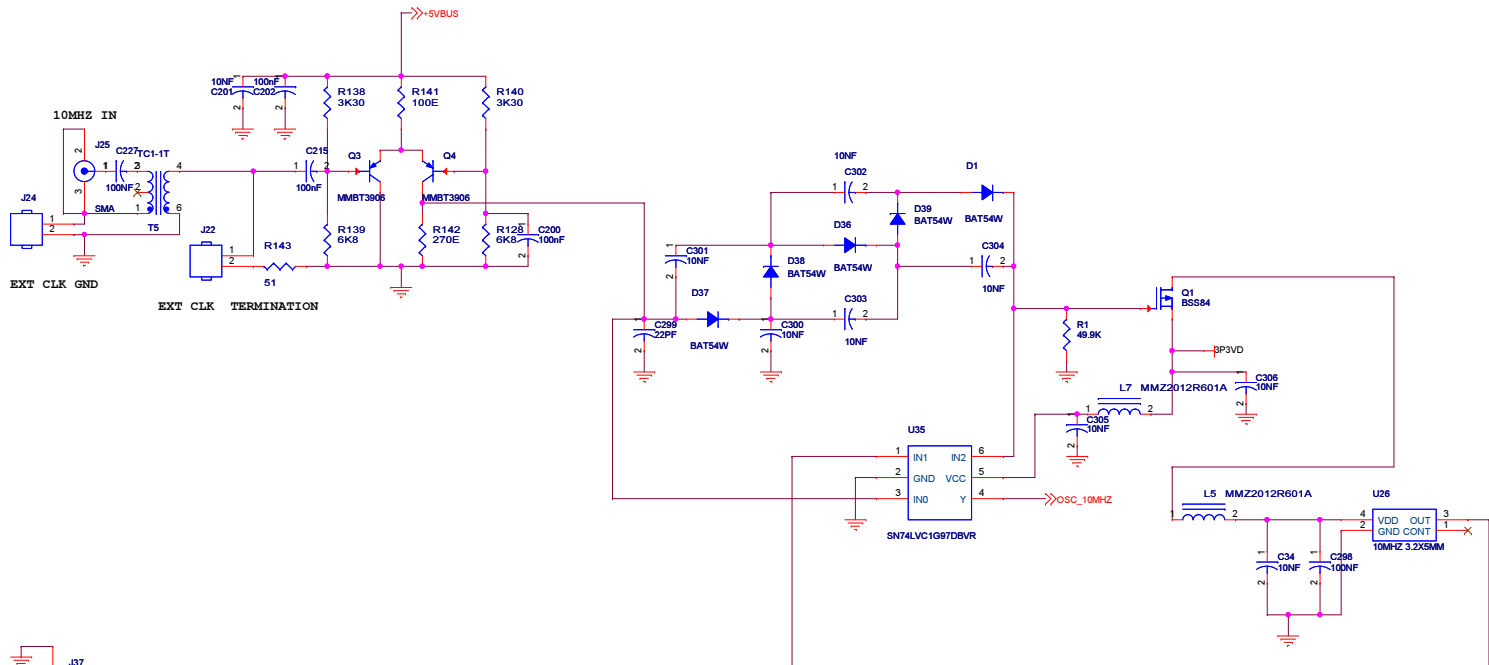
EP4CGX150F896  
VERSION : 1.0  
PAGE : 6 of 10  
DATE : JUNE 2010





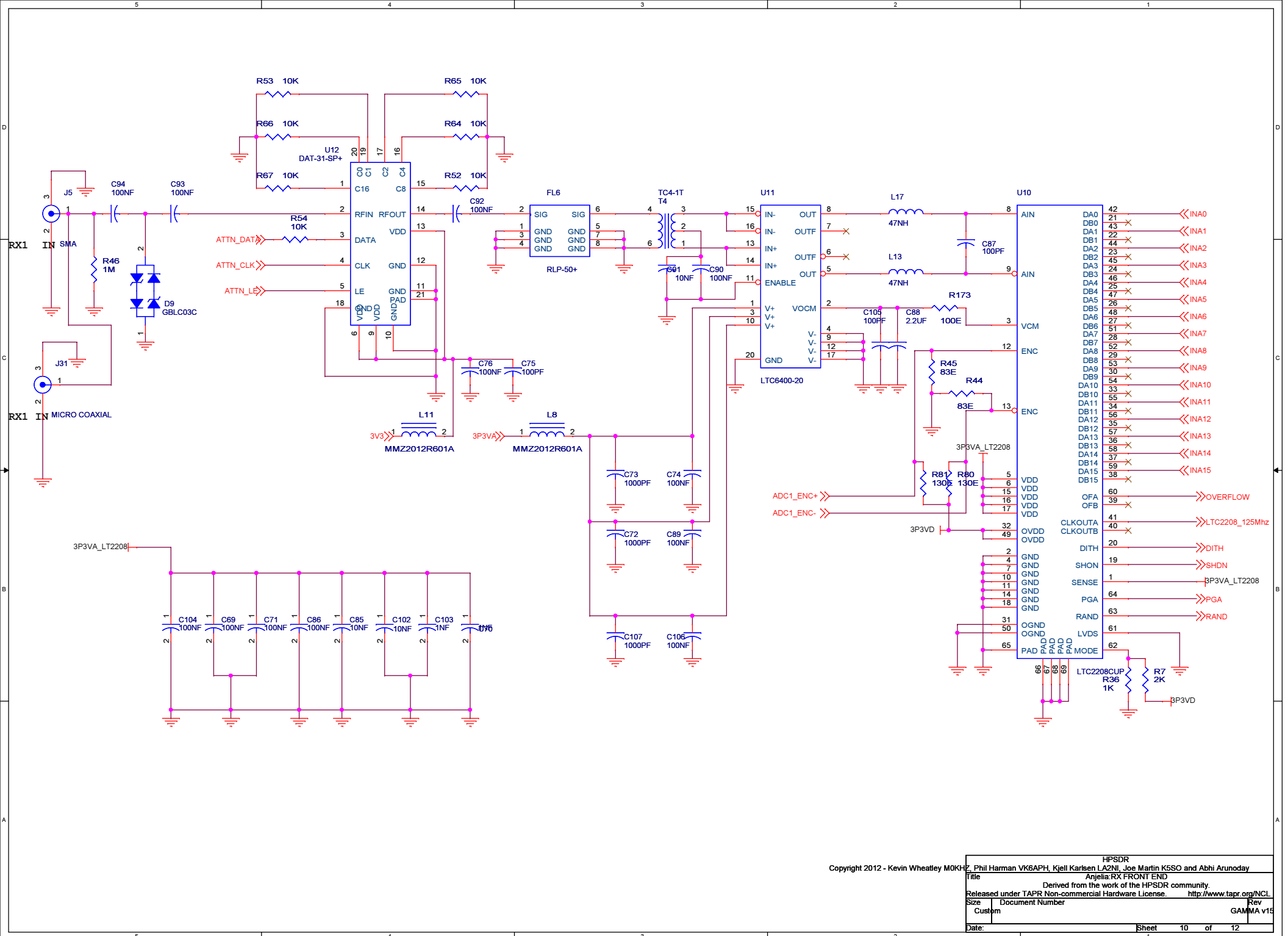


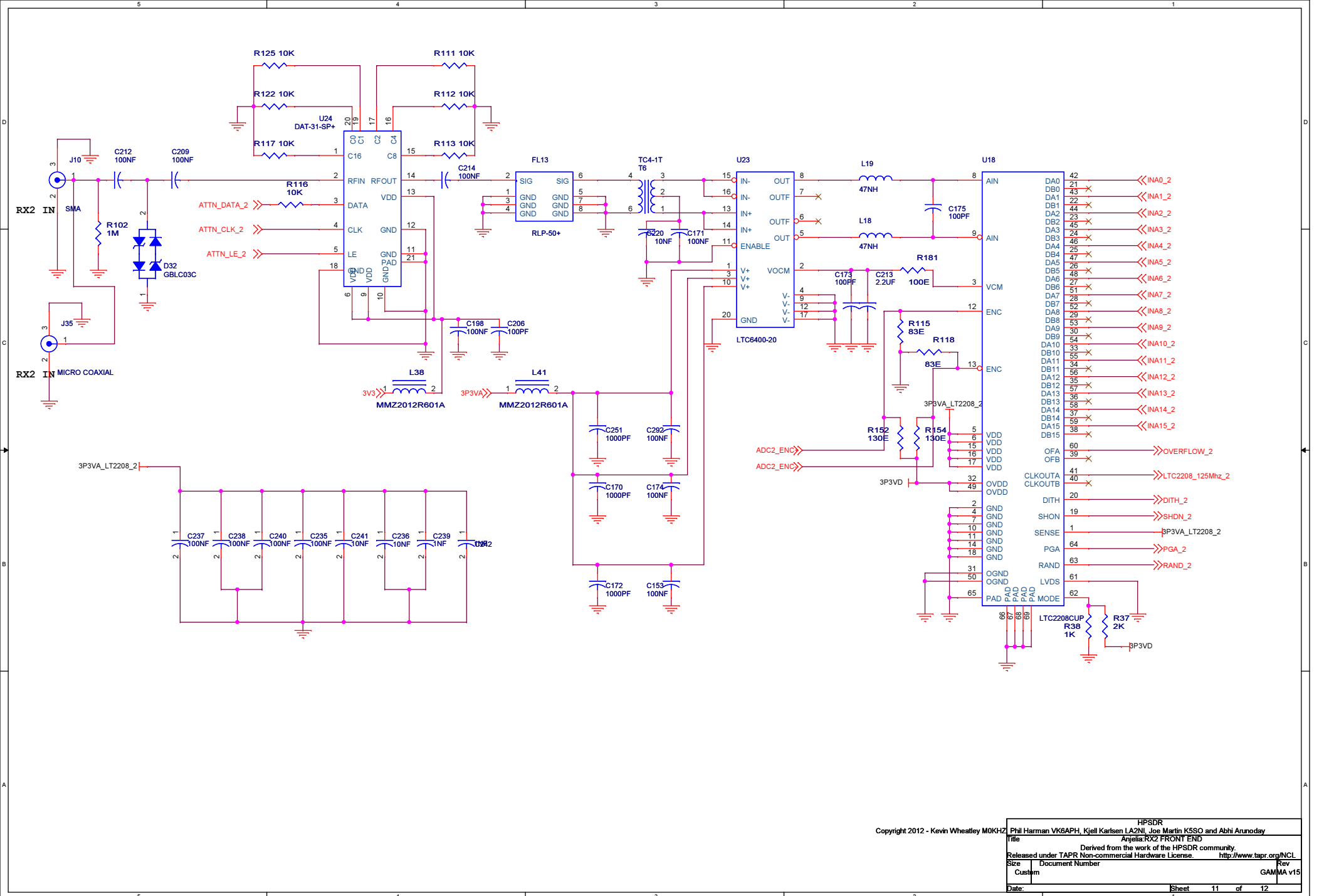




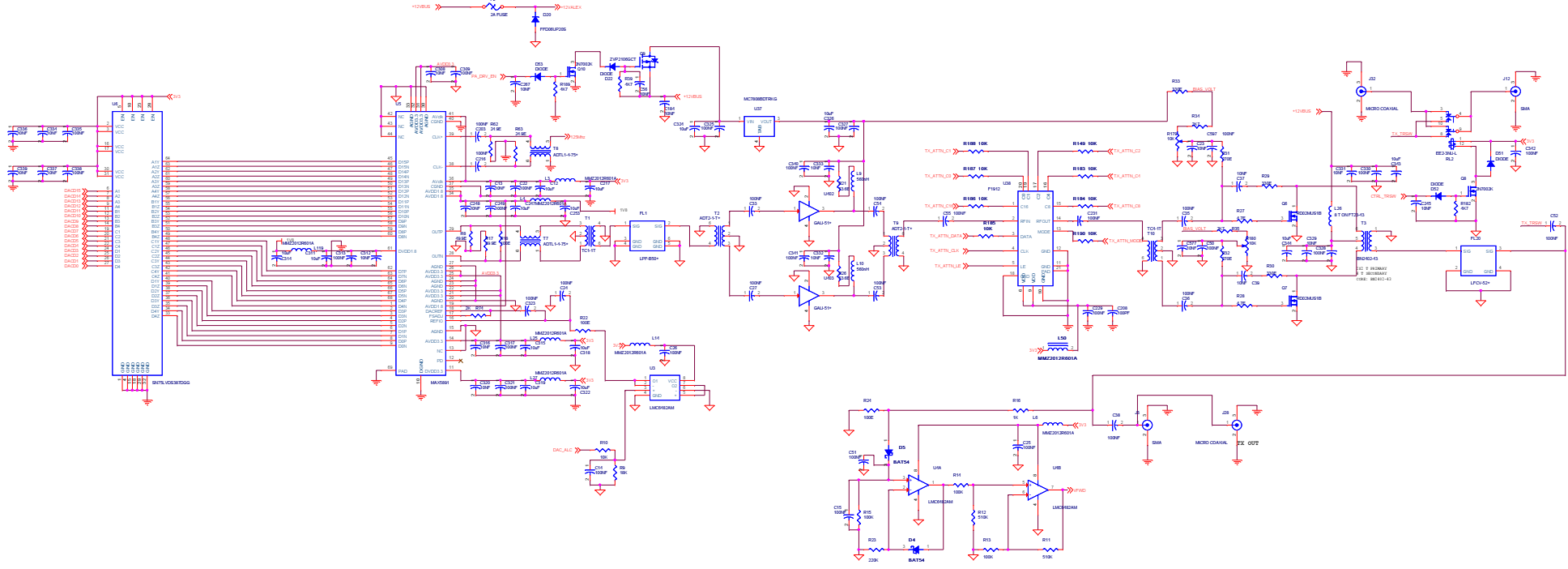
Copyright 2012 - Kevin Wheatley M0KHC

HPSDR	
Title: Phil Herman VK5APH, Kjell Karlsson LA2NE, Jos Martin KSSO and Abbi Anunoday	
Anjella: CLCCKS	
Derived from the work of the HPSDR community.	
Released under TAPR Non-commercial Hardware License. <a href="http://www.tapr.org/NCL">http://www.tapr.org/NCL</a>	
Size	Document Number
Custom	Rev
Date:	GAMMA v15
	Sheet 9 of 12





HPSDR  
 Copyright 2012 - Kevin Wheatley MOKHZ  
 Phil Harman VK6APH, Kjell Karlsen LA2NI, Joe Martin K5SO and Abhi Arunoday  
 Arjelia:RX2 FRONT END  
 Derived from the work of the HPSDR community.  
 Released under TAPR Non-commercial Hardware License. <http://www.tapr.org/NCL>  
 Size Document Number Rev  
 Custom GAMMA v15  
 Date: Sheet 11 of 12



Copyright 2012 - Alan Whalley MBE FRCGS  
 This document is the property of Alan Whalley MBE FRCGS and is not to be distributed outside the company.  
 All rights reserved. No part of this document may be reproduced without the written permission of Alan Whalley MBE FRCGS.